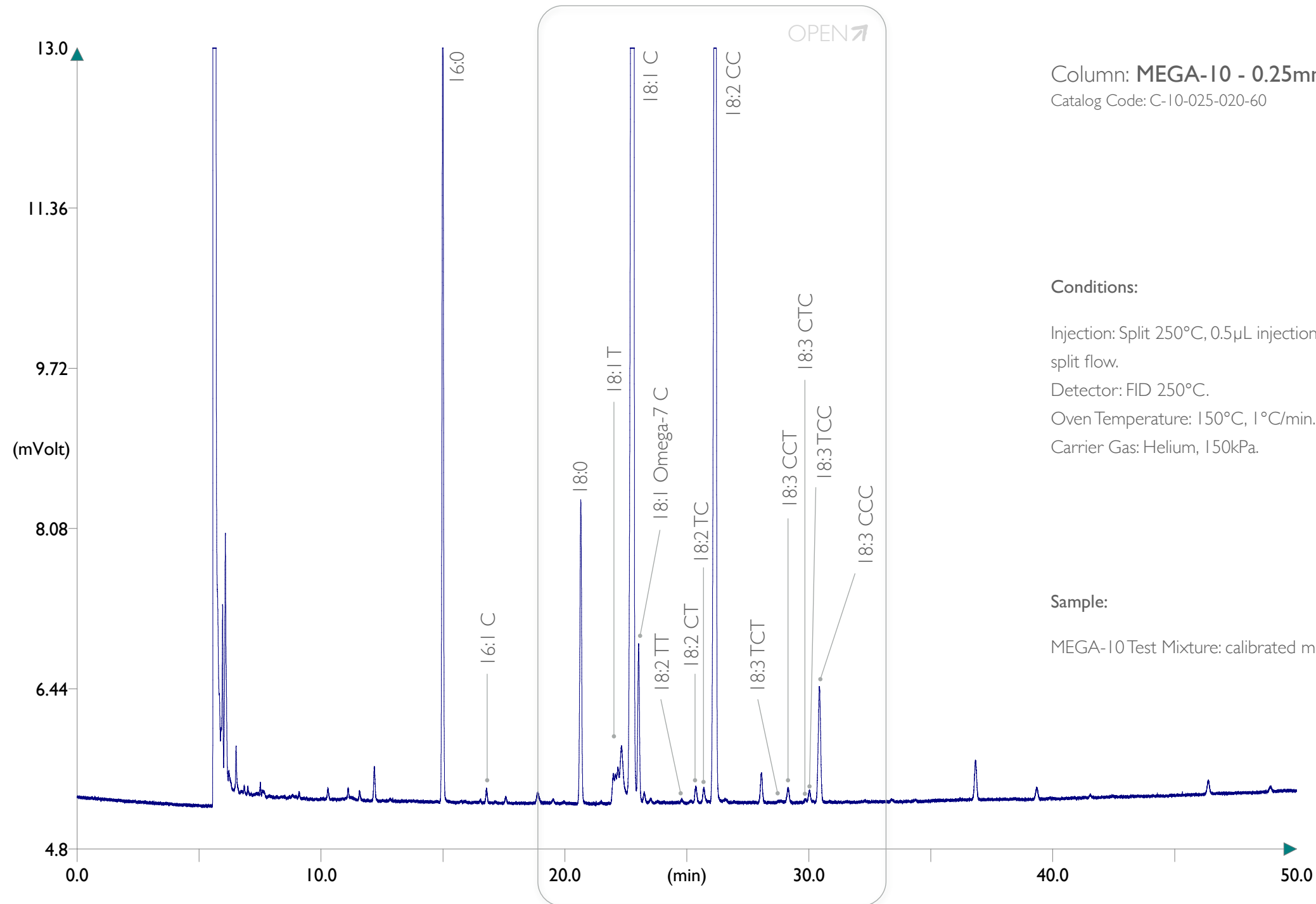


FAMEs *cis/trans* Isomers on MEGA-10 column



Column: **MEGA-10 - 0.25mm, 0.20 μ m, 60m**
Catalog Code: C-10-025-020-60

Conditions:

Injection: Split 250°C, 0.5 μ L injection volume, 35mL/min split flow.

Detector: FID 250°C.

Oven Temperature: 150°C, 1°C/min.

Carrier Gas: Helium, 150kPa.

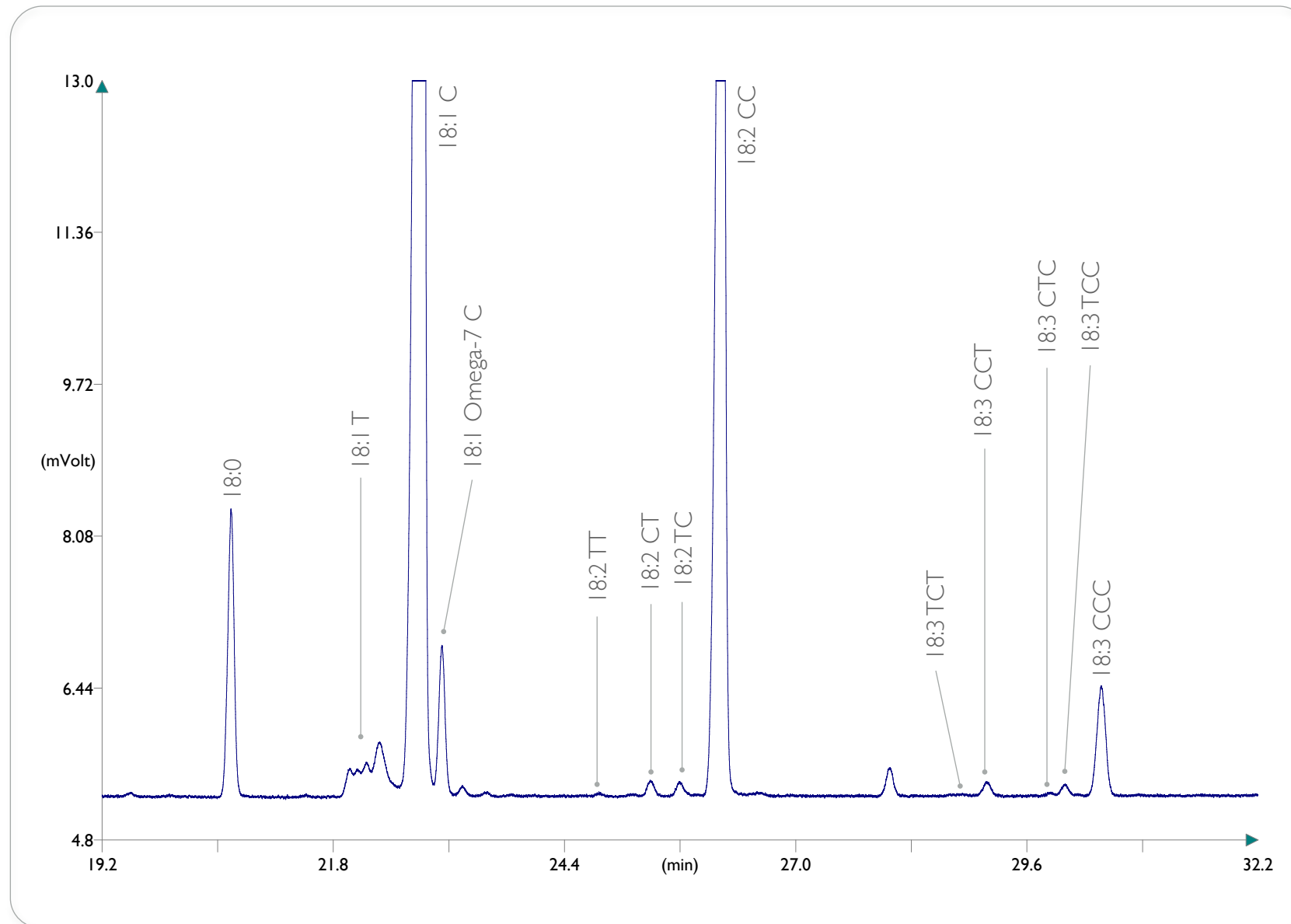
Sample:

MEGA-10 Test Mixture: calibrated mix of *cis/trans* FAMEs.



www.mega.mi.it

FAMEs *cis/trans* Isomers on MEGA-10 column



Column: **MEGA-10 - 0.25mm, 0.20 μ m, 60m**
Catalog Code: C-10-025-020-60

Conditions:

Injection: Split 250°C, 0.5 μ L injection volume, 35mL/min split flow.

Detector: FID 250°C.

Oven Temperature: 150°C, 1°C/min.

Carrier Gas: Helium, 150kPa.

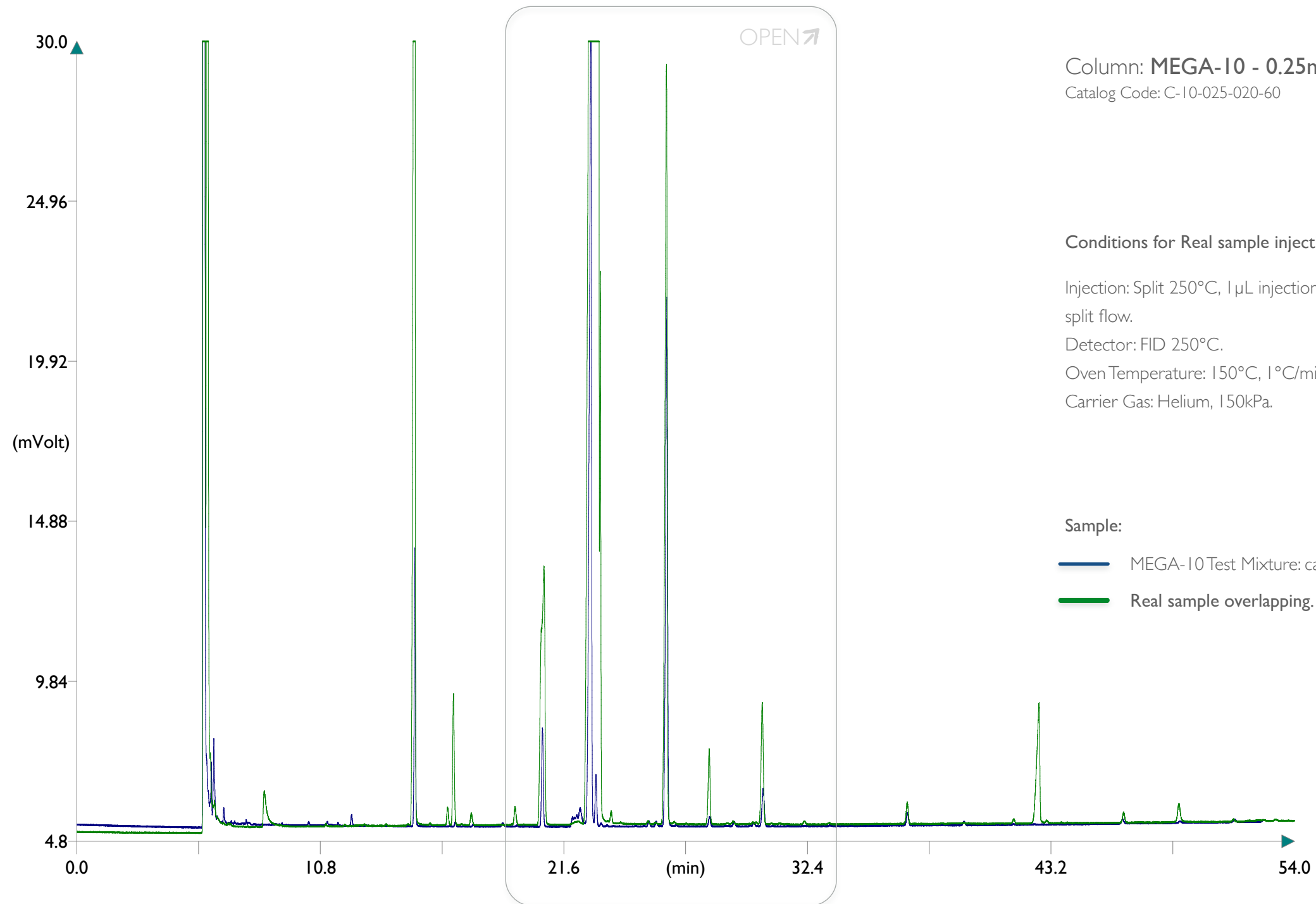
Sample:

MEGA-10 Test Mixture: calibrated mix of *cis/trans* FAMEs.

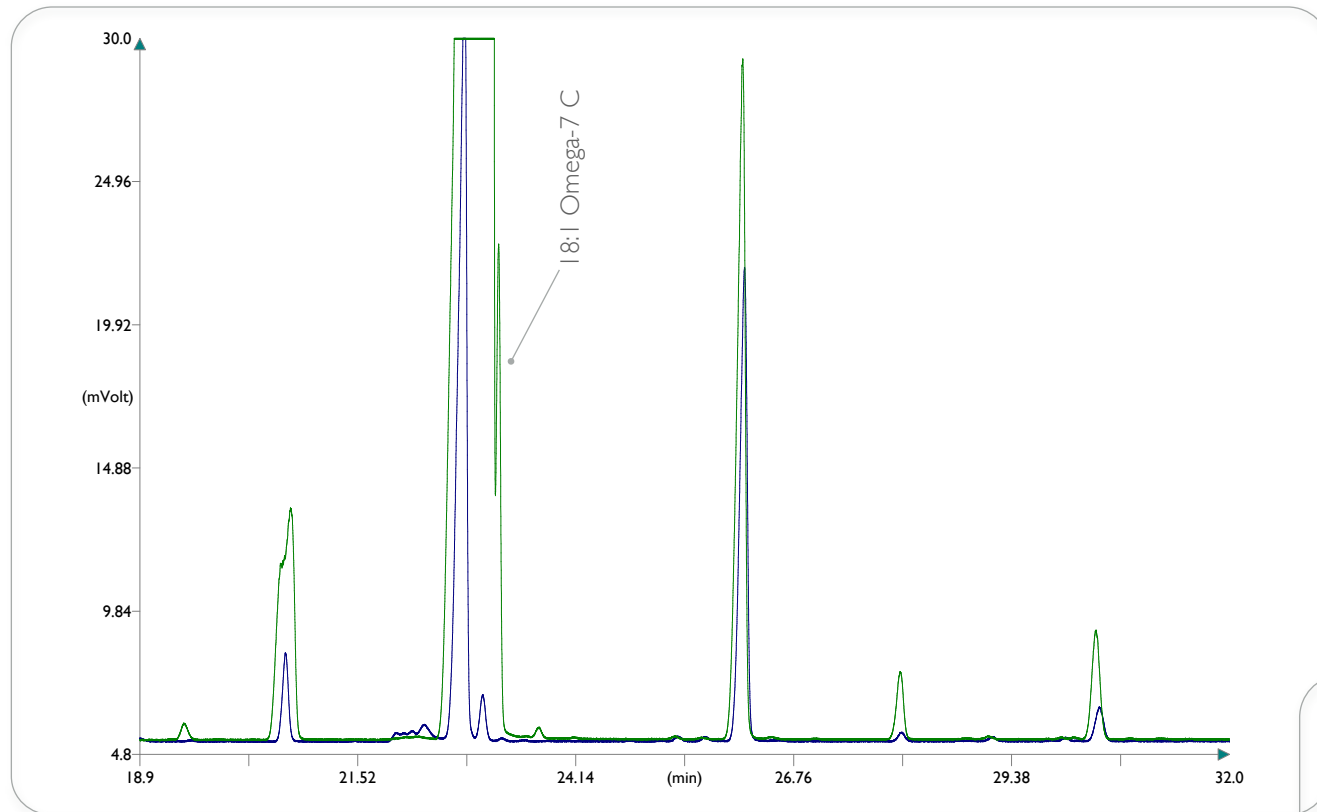


www.mega.mi.it

FAMEs *cis/trans* Isomers on MEGA-10 column



FAMEs *cis/trans* Isomers on MEGA-10 column



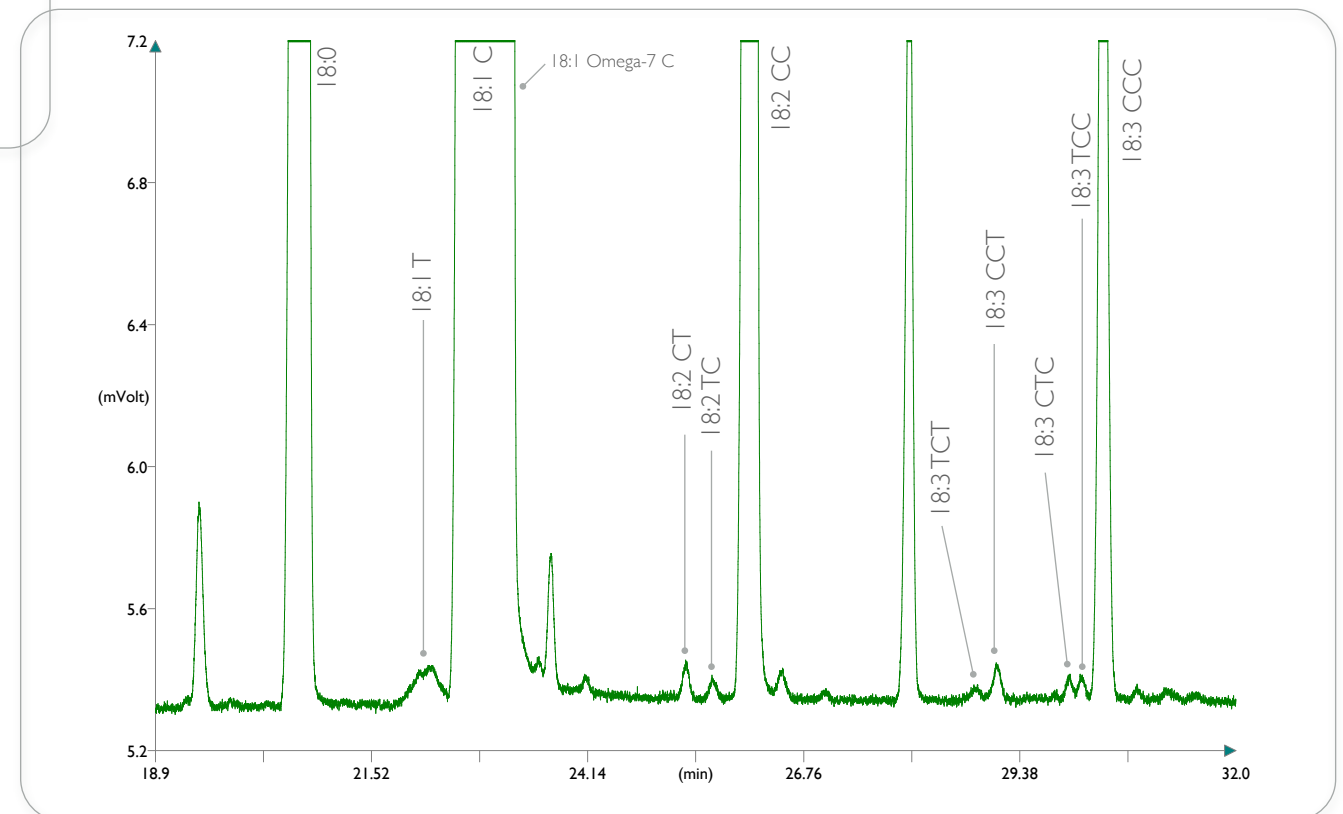
Column: **MEGA-10** - 0.25mm, 0.20µm, 60m
Catalog Code: C-10-025-020-60

Conditions for Real sample injection:

Injection: Split 250°C, 1 µL injection volume, 30mL/min split flow.
Detector: FID 250°C.
Oven Temperature: 150°C, 1°C/min.
Carrier Gas: Helium, 150kPa.

Sample:

- MEGA-10 Test Mixture: calibrated mix of *cis/trans* FAMEs.
- Real sample overlapping.



www.mega.mi.it



since
1980



contact us: info@mega.mi.it

 follow us [@MEGAColumns](https://twitter.com/MEGAColumns)

www.mega.mi.it