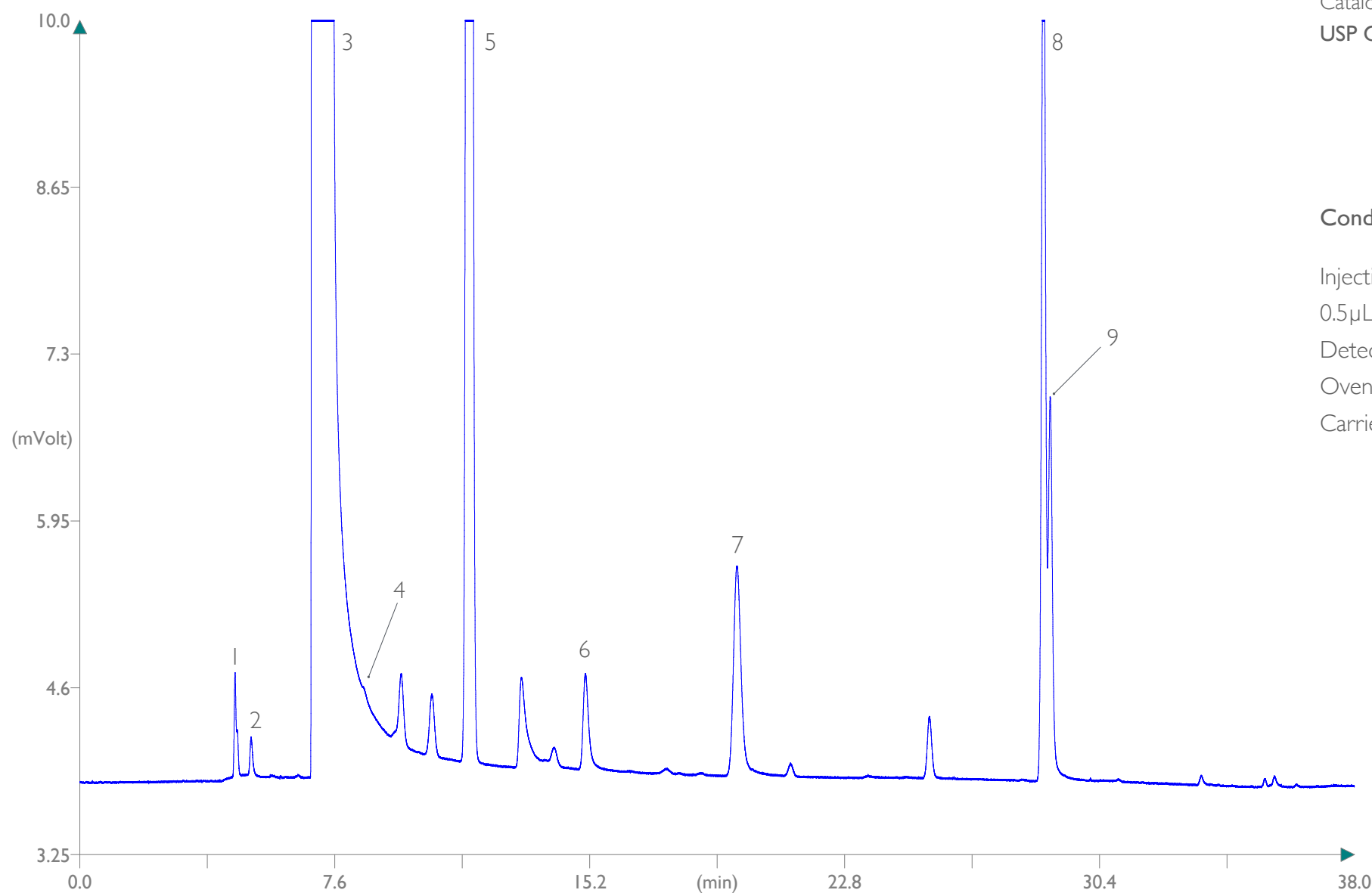


Whisky (direct split injection)



Column: **MEGA-624 - 0.25mm, 1.40 μ m, 60m**

Catalog Code: C-624-025-140-60

USP G43 stationary phase

Conditions:

Injection: Split, 200°C, 120mL/min split flow,
0.5 μ L injected volume.

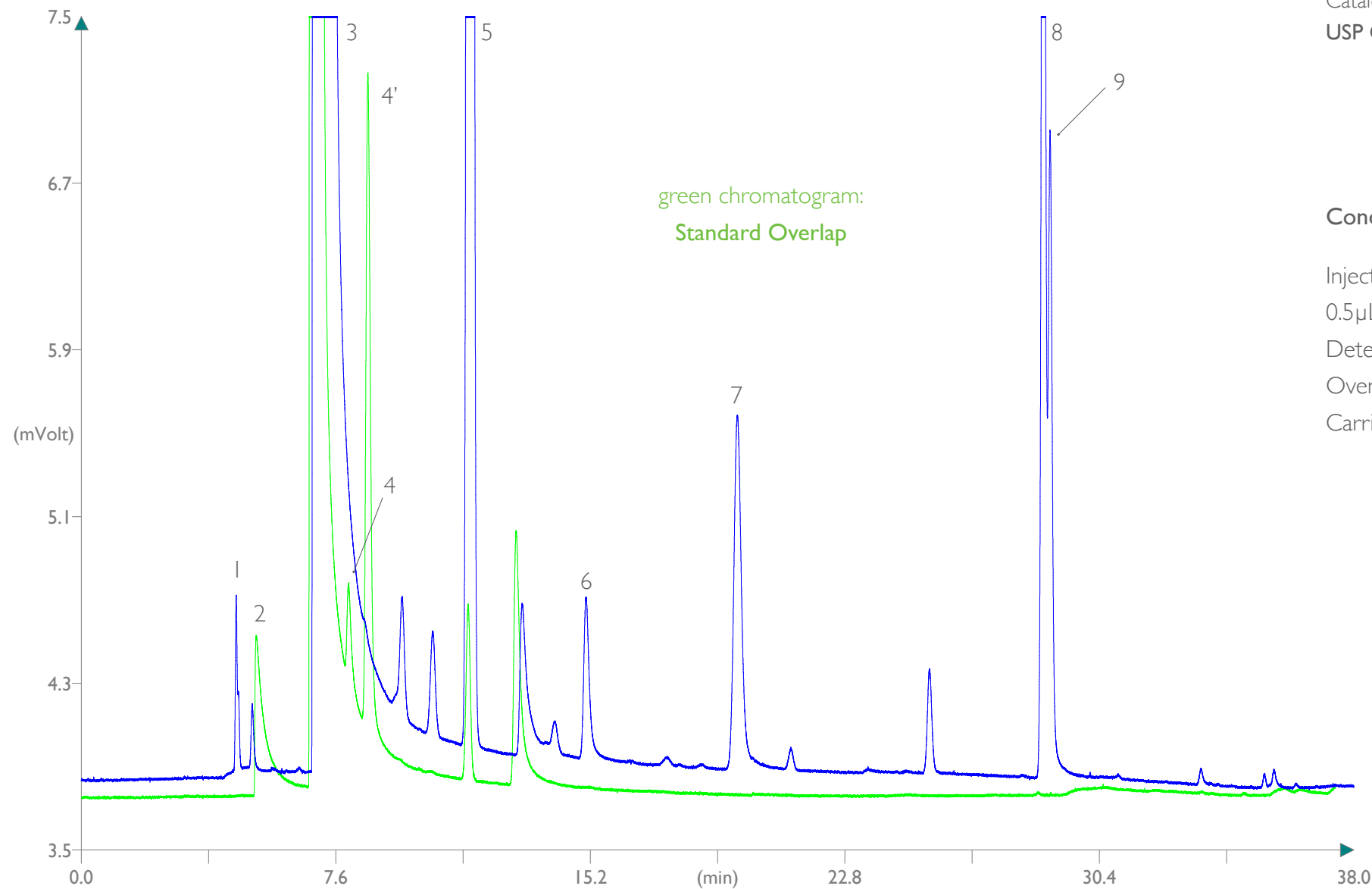
Detector: FID 250°C.

Oven Program: 35°C (5 min), 1°C/min, 50°C, 5°C/min.

Carrier Gas: Hydrogen, 120kPa.

1. Acetaldehyde
2. Methanol
3. Ethanol
4. Acetone
5. n-Propanol
6. Ethyl Acetate
7. Isobutanol
8. Isoamyl alcohol
9. Active amyl alcohol

Whisky (direct split injection)



Column: **MEGA-624 - 0.25mm, 1.40 μ m, 60m**

Catalog Code: C-624-025-140-60

USP G43 stationary phase

Conditions:

Injection: Split, 200°C, 120mL/min split flow,
0.5 μ L injected volume.

Detector: FID 250°C.

Oven Program: 35°C (5 min), 1°C/min, 50°C, 5°C/min.

Carrier Gas: Hydrogen, 120kPa.

- 1. Acetaldehyde
- 2. Methanol (standard)
- 3. Ethanol
- 4. Acetone
- 4'. Isopropanol
- 5. n-Propanol
- 6. Ethyl Acetate
- 7. Isobutanol
- 8. Isoamyl alcohol
- 9. Active amyl alcohol



since
1980



contact us: info@mega.mi.it

 follow us [@MEGAColumns](https://twitter.com/MEGAColumns)

www.mega.mi.it