

# Blood Alcohols (Headspace - GC)

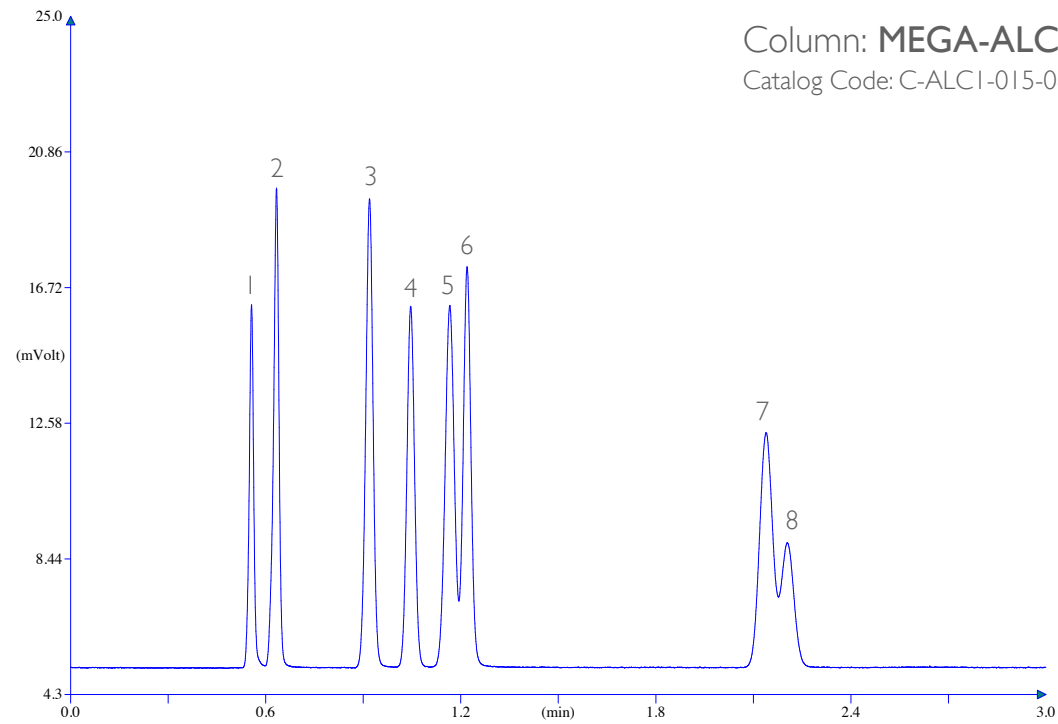


## Conditions:

Injection: Split 200°C, 1 mL injection volume with gas syringe, 30 mL/min split flow.  
Headspace conditions: incubation time 10 min @ 70°C (syringe temperature 80°C).  
Detector: FID 250°C.  
Oven Temperature: 35°C, isothermal.  
Carrier Gas: Hydrogen, 70 kPa.

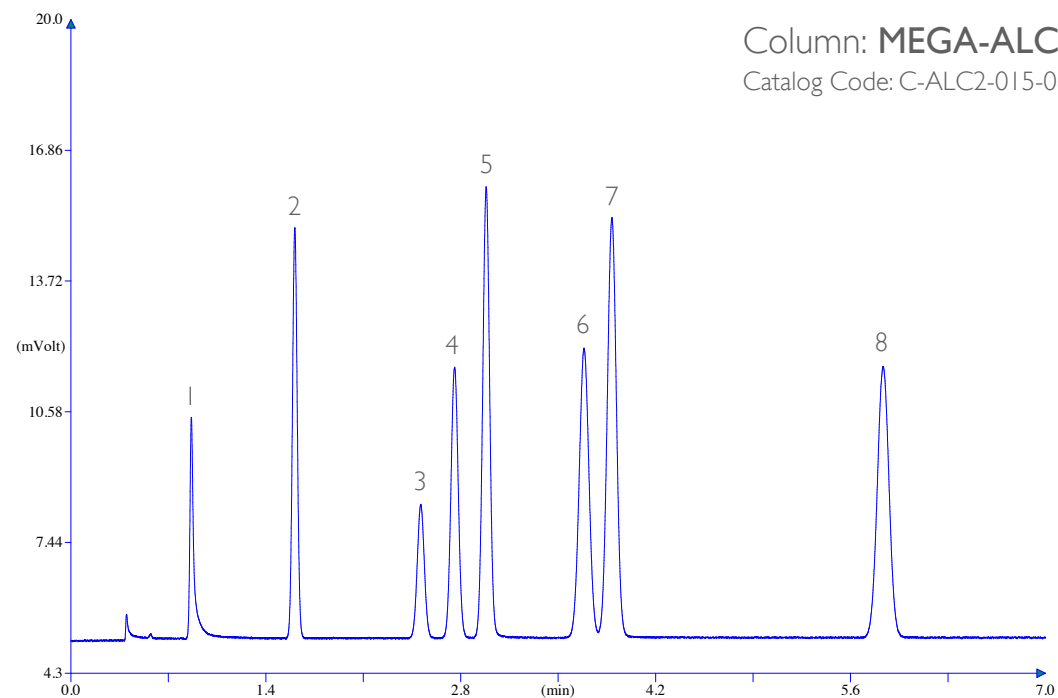
Analysis carried out with HTA HT2000H GC Headspace Sampler.

contact us to have more info about MEGA-ALC 1&2 columns kit special price



Column: **MEGA-ALC 1 - 0.15mm, 0.85µm, 10m**  
Catalog Code: C-ALC1-015-085-10

1. Acetaldehyde
2. Methanol
3. Ethanol
4. Acetone
5. Isopropanol
6. Acetonitrile
7. MEK
8. Ethyl acetate



Column: **MEGA-ALC 2 - 0.15mm, 0.85µm, 10m**  
Catalog Code: C-ALC2-015-085-10

1. Acetaldehyde
2. Acetone
3. Ethyl acetate
4. MEK
5. Methanol
6. Isopropanol
7. Ethanol
8. Acetonitrile



[www.mega.mi.it](http://www.mega.mi.it)



since  
1980



**MEGA**<sup>®</sup>  
improve your GC analysis

contact us: [info@mega.mi.it](mailto:info@mega.mi.it)



follow us [@MEGAColumns](https://twitter.com/MEGAColumns)

[www.mega.mi.it](http://www.mega.mi.it)