

Column: **MEGA-DEX DAC Beta - 0.25mm, 0.25 μ m, 25m**
Catalog Code: DEX-DAC-B-025-025-25

Conditions:

Injection: Split 250°C, 0.5 μ L injection volume,
90mL/min split flow.
Detector: FID 250°C.
Oven Program: 50°C, 2°C/min, 225°C.
Carrier Gas: Hydrogen, 80kPa.

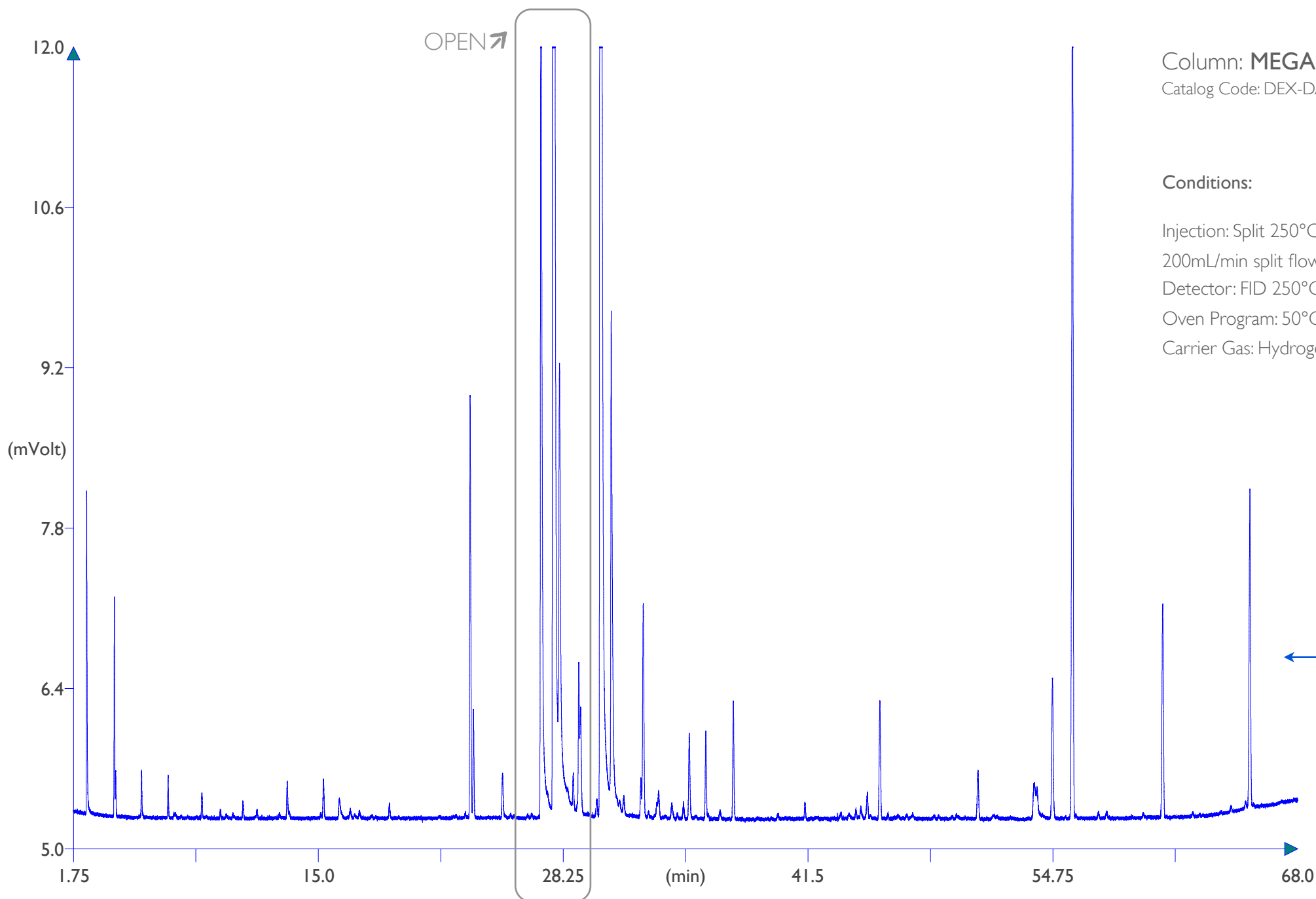
Sample:

(S)-(-)-Beta-Citronellol (CAS # 7540-51-4), Sigma-Aldrich
Cat. # 303488.

(R)-(+)-Beta-Citronellol (CAS # 1117-61-9), Sigma-Aldrich
Cat. # 303461.

Dilution sample: 2 μ L/1mL in n-Hexane each.

Beta-Citronellol chiral separation



Column: **MEGA-DEX DAC Beta** - 0.25mm, 0.25 μ m, 25m
Catalog Code: DEX-DAC-B-025-025-25

Conditions:

Injection: Split 250°C, 0.5 μ L injection volume,
200mL/min split flow.
Detector: FID 250°C.
Oven Program: 50°C, 2°C/min, 225°C.
Carrier Gas: Hydrogen, 80kPa.

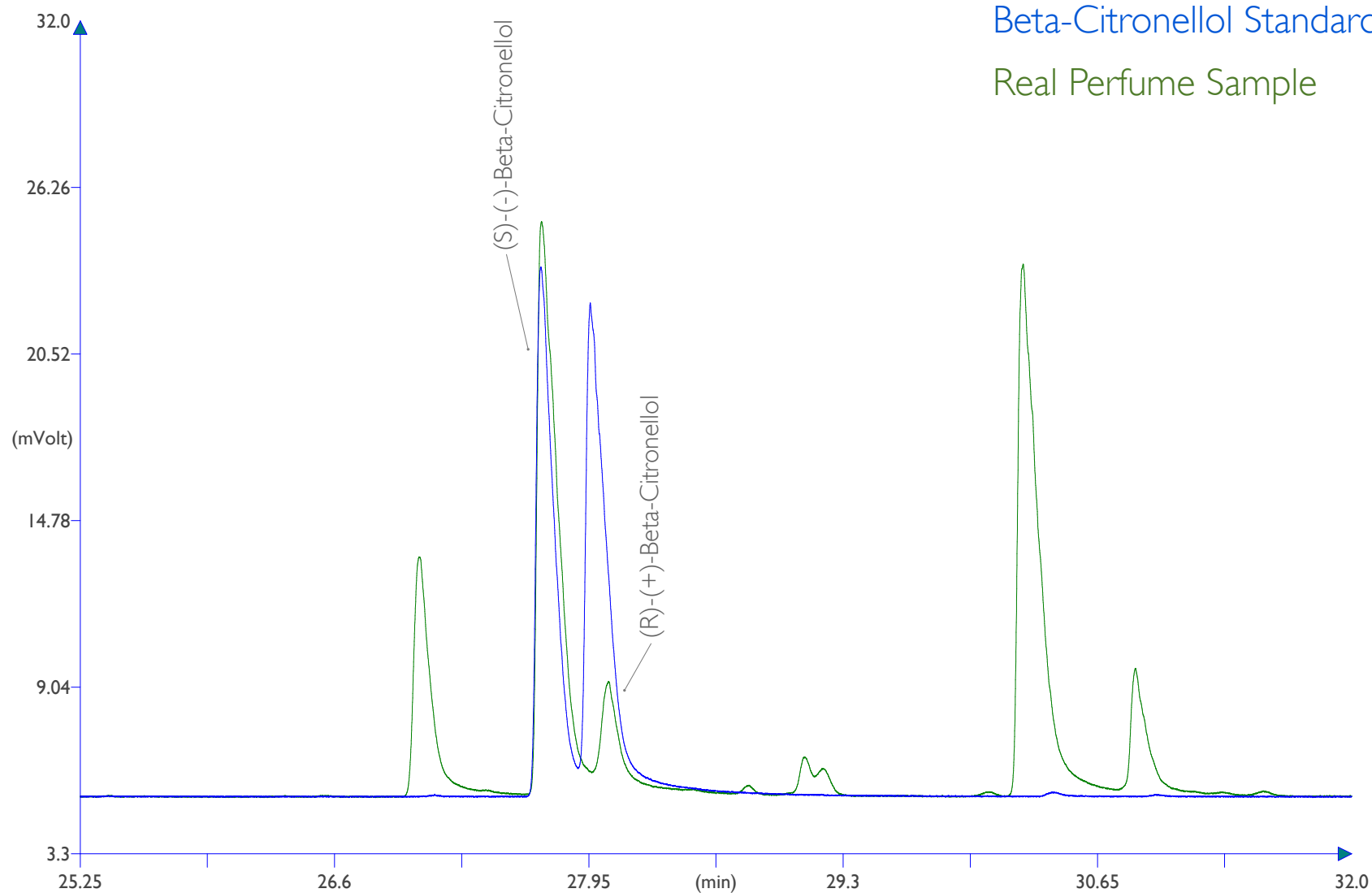
← **Real Perfume Sample**
diluted 1:100 in n-Hexane

Beta-Citronellol chiral separation



Column: MEGA-DEX DAC Beta - 0.25mm, 0.25 μ m, 25m
Catalog Code: DEX-DAC-B-025-025-25

Beta-Citronellol Standards Real Perfume Sample



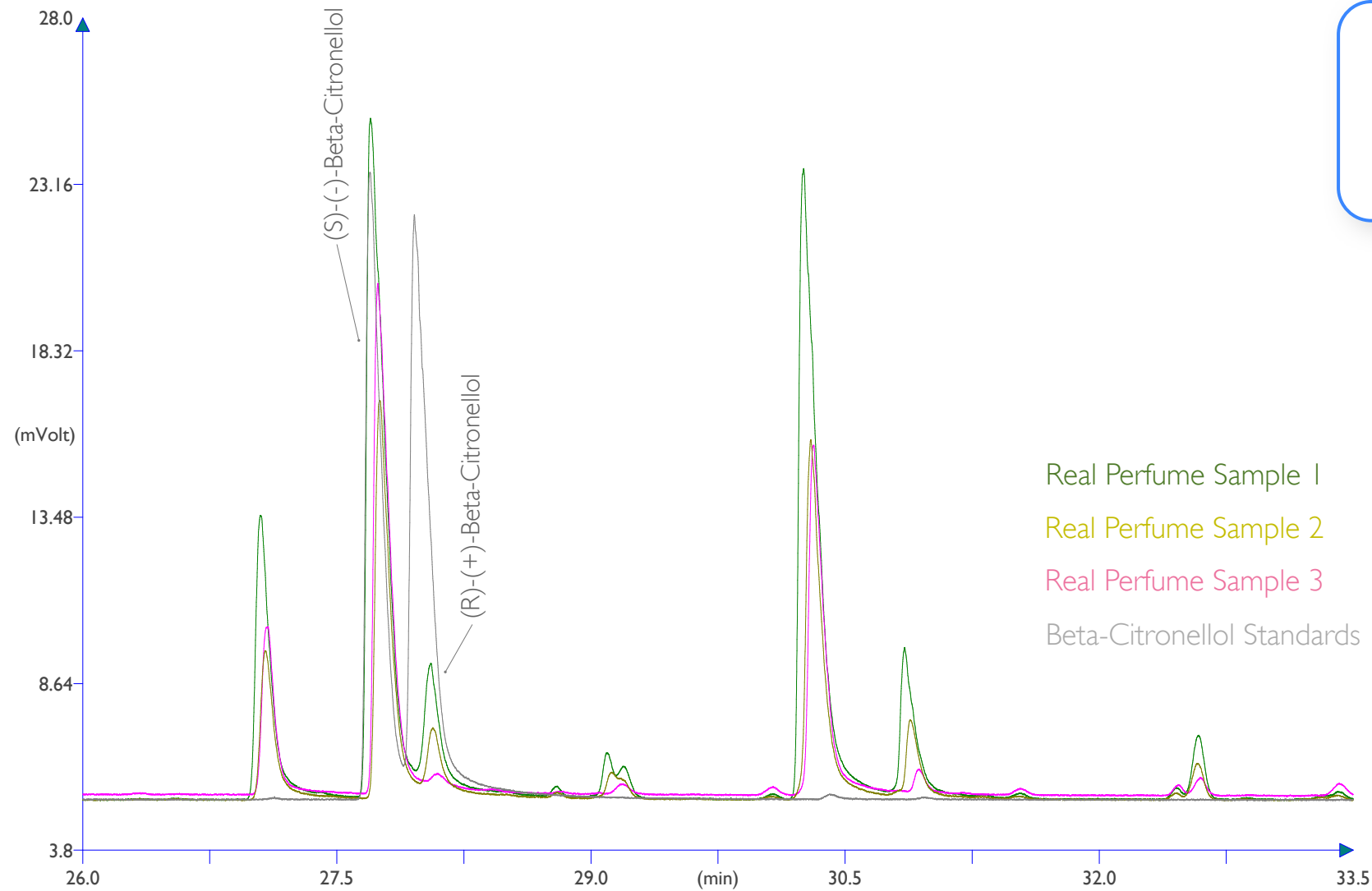
Conditions:

Injection: Split 250°C, 0.5 μ L injection volume,
200mL/min split flow.
Detector: FID 250°C.
Oven Program: 50°C, 2°C/min, 225°C.
Carrier Gas: Hydrogen, 80kPa.

GO BACK
TO THE ENTIRE
PERFUME PROFILE



Column: MEGA-DEX DAC Beta - 0.25mm, 0.25 μ m, 25m
Catalog Code: DEX-DAC-B-025-025-25



Determination of
(S)-(-)-Beta-Citronellol ratios
in different real perfume samples

Conditions:

Injection: Split 250°C, 0.5 μ L injection volume,
200mL/min split flow.
Detector: FID 250°C.
Oven Program: 50°C, 2°C/min, 225°C.
Carrier Gas: Hydrogen, 80kPa.



since
1980



MEGA[®]
improve your GC analysis

contact us: info@mega.mi.it



follow us [@MEGAColumns](https://twitter.com/MEGAColumns)

www.mega.mi.it