

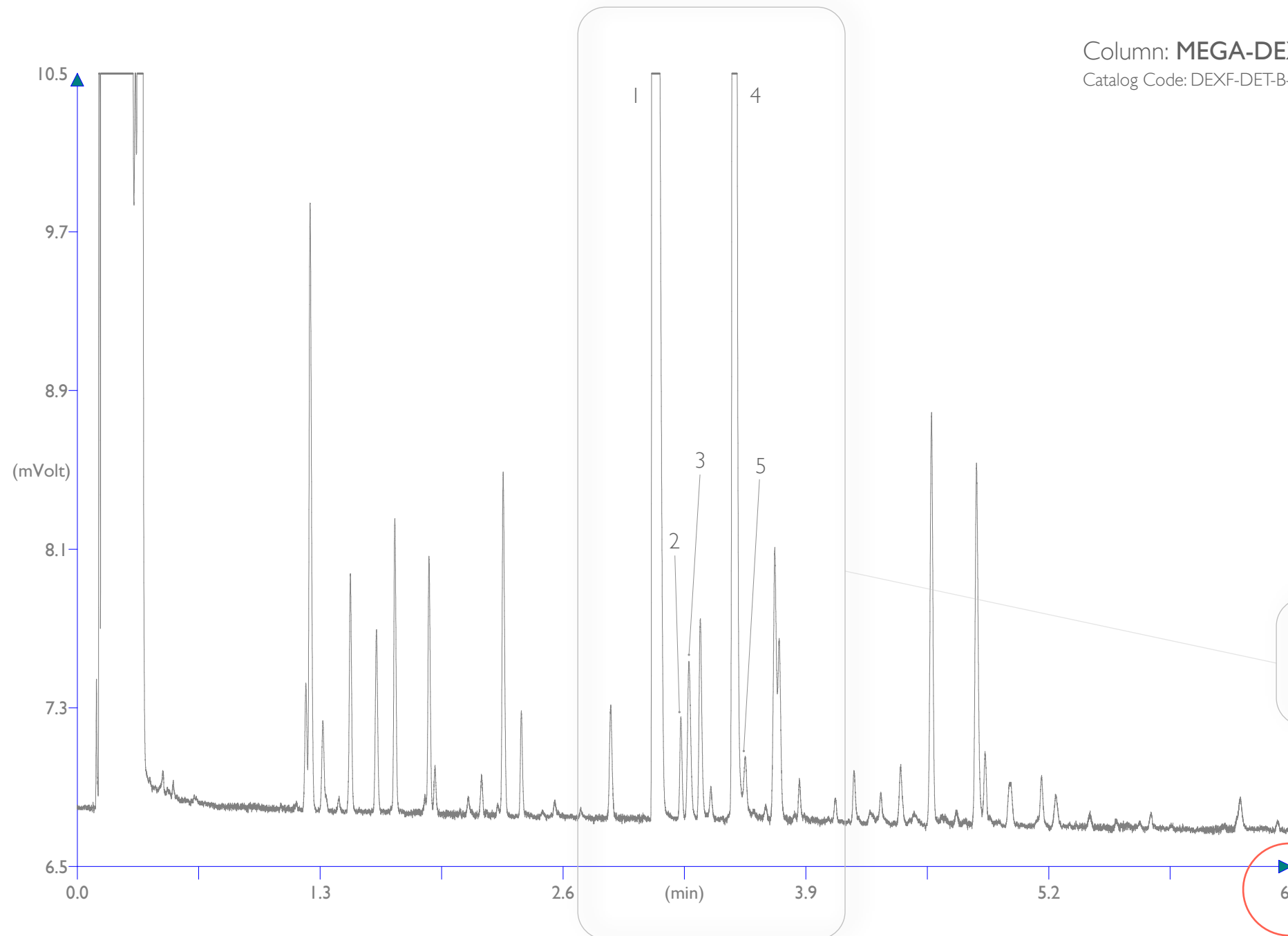


dex FAST
DEX FAST

improve Your chiral GC analysis

since
1980





Column: **MEGA-DEX DET Beta FAST** - 0.10mm, 0.10 μ m, 5m
Catalog Code: DEXF-DET-B-010-010-5

Conditions:

Injection: Split 250°C, 0.2 μ L, 100mL/min Split Flow.
Sample Dilution: 0.5% in n-Hexane.
Detector: FID 250°C.
Oven Program: 50°C, 15°C/min, 150°C.
Carrier Gas: Hydrogen, 140kPa constant Pressure.

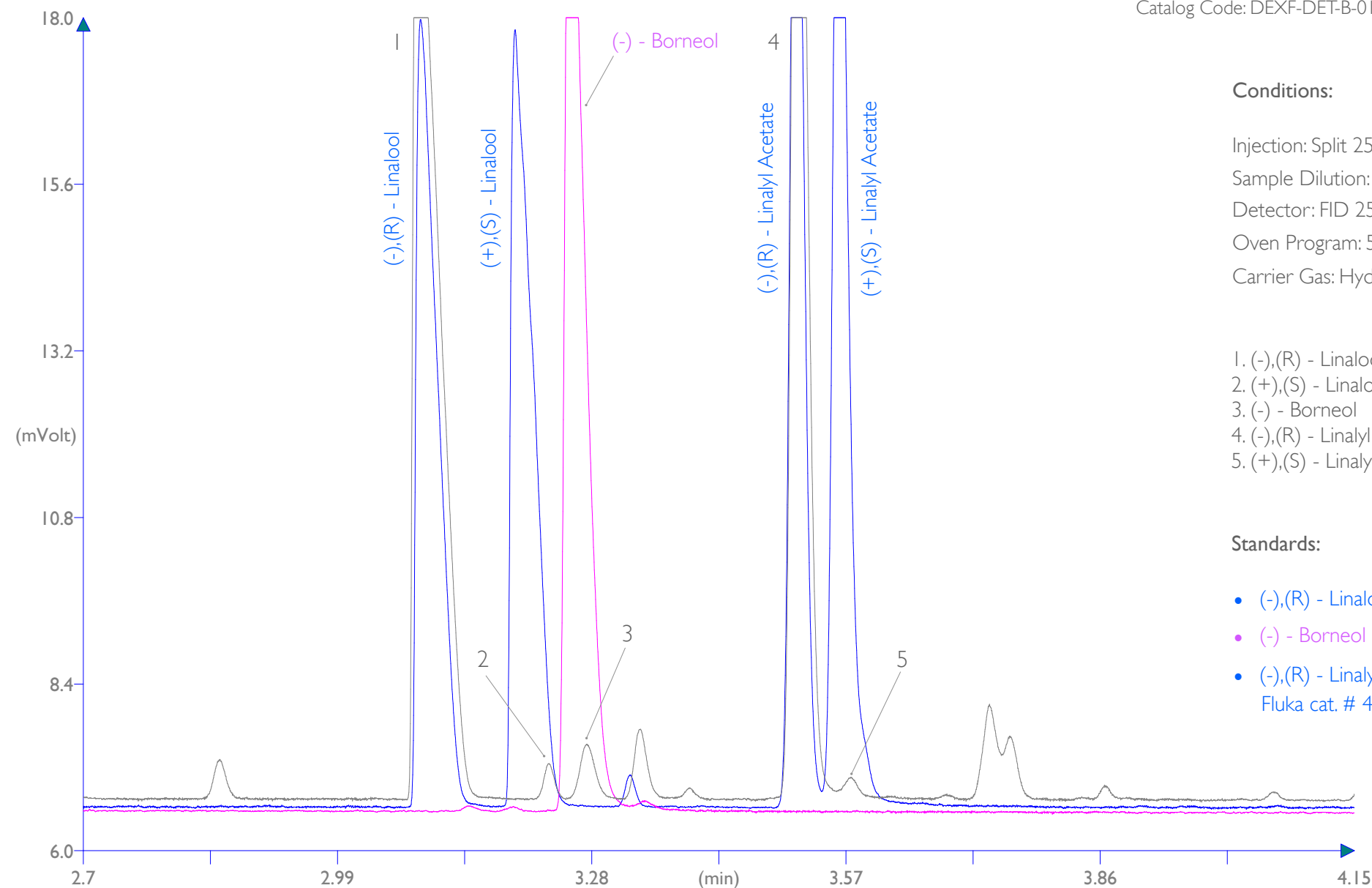
1. (-),(R) - Linalool
2. (+),(S) - Linalool
3. (-) - Borneol
4. (-),(R) - Linalyl Acetate
5. (+),(S) - Linalyl Acetate

[Click here to zoom this portion of the chromatogram](#)

6.5 **Only 6.5 min analysis time**



Column: **MEGA-DEX DET Beta FAST - 0.10mm, 0.10 μ m, 5m**
 Catalog Code: DEXF-DET-B-010-010-5



Conditions:

Injection: Split 250°C, 0.2 μ L, 100mL/min Split Flow.
 Sample Dilution: 0.5% in n-Hexane.
 Detector: FID 250°C.
 Oven Program: 50°C, 15°C/min, 150°C.
 Carrier Gas: Hydrogen, 140kPa constant Pressure.

1. (-),(R) - Linalool
2. (+),(S) - Linalool
3. (-) - Borneol
4. (-),(R) - Linalyl Acetate
5. (+),(S) - Linalyl Acetate

Standards:

- (-),(R) - Linalool, (+),(S) - Linalool - Fluka cat. # 62140
- (-) - Borneol - Fluka cat. # 15598
- (-),(R) - Linalyl Acetate, (+),(S) - Linalyl Acetate
 Fluka cat. # 45980



contact us: info@mega.mi.it

 follow us [@MEGAColumns](https://twitter.com/MEGAColumns)

www.mega.mi.it

since
1980 