

Linalool, Linalyl Acetate, Borneol in Lavender Oil

Chiral Separation on MEGA-DEX Columns

Column: **MEGA-DEX DET Beta - 0.25mm, 0.25 μ m, 25m**

Catalog Code: DEX-DET-B-025-025-25

Conditions:

Injection: Split 250°C, 0.5 μ L, 1:80 Split Ratio.

Sample dilution: 1mg/1mL in n-Hexane.

Detector: FID 250°C.

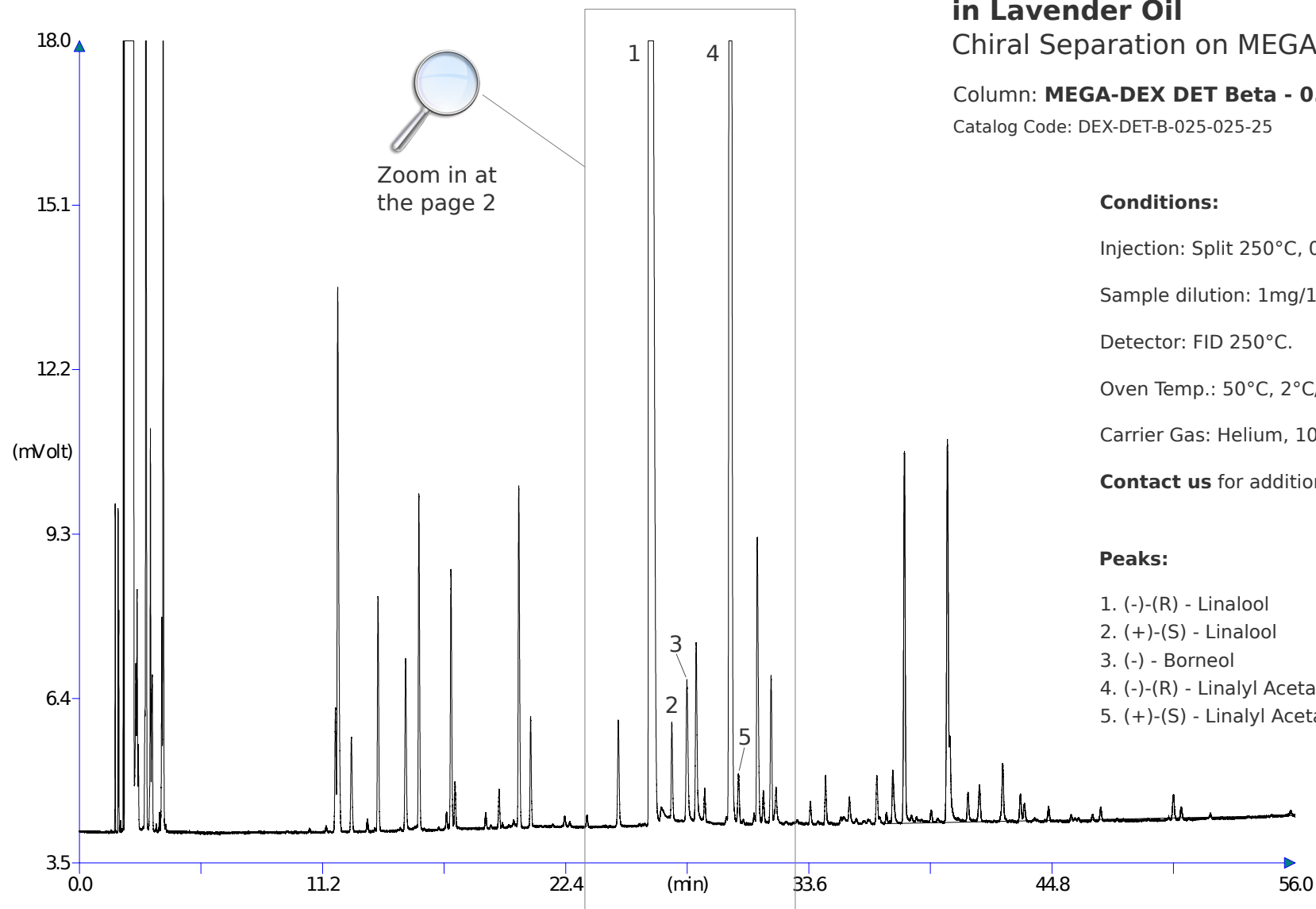
Oven Temp.: 50°C, 2°C/min, 220°C.

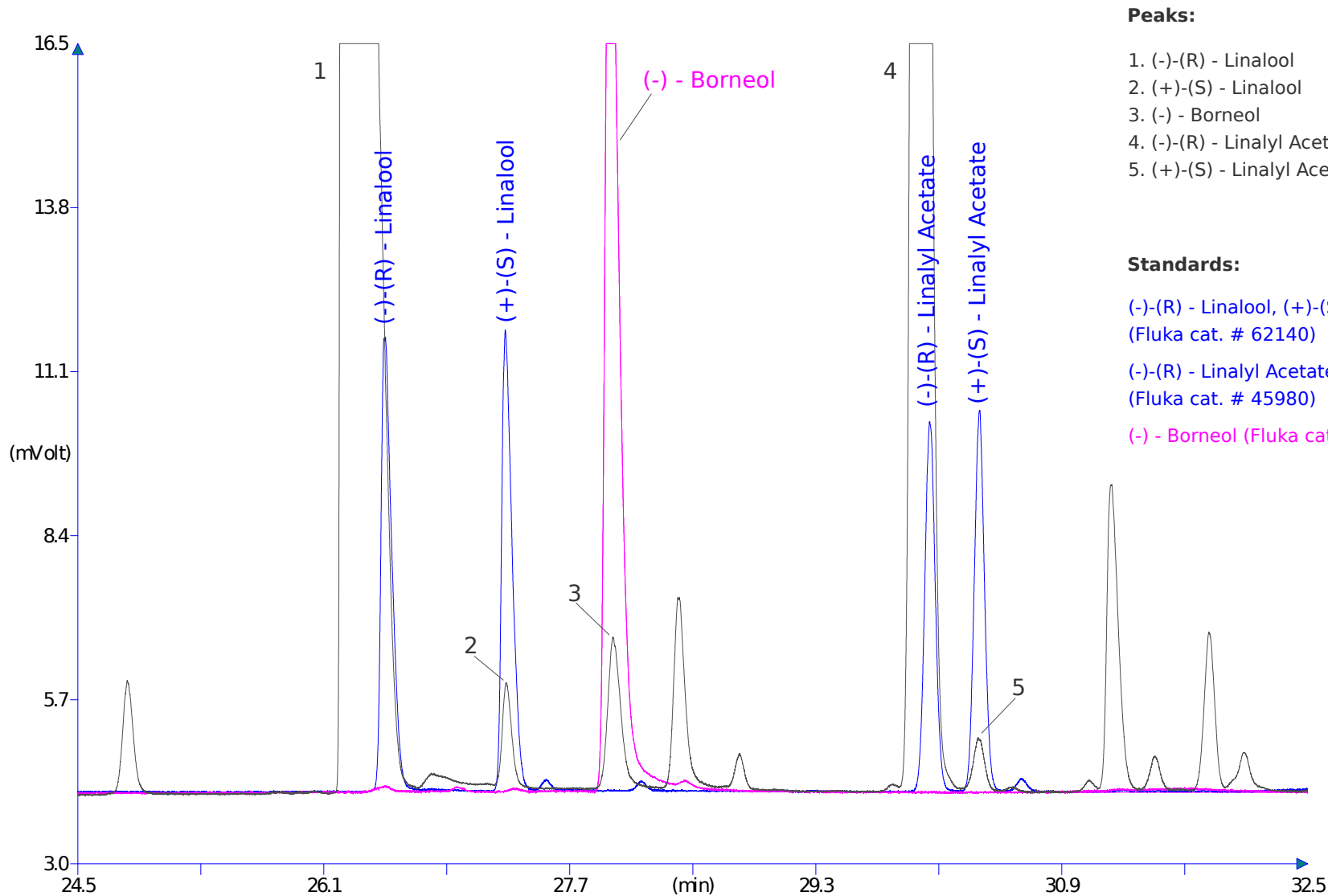
Carrier Gas: Helium, 100kPa.

Contact us for additional information.

Peaks:

1. (-)-(R) - Linalool
2. (+)-(S) - Linalool
3. (-) - Borneol
4. (-)-(R) - Linalyl Acetate
5. (+)-(S) - Linalyl Acetate





Peaks:

1. (-)-(R) - Linalool
2. (+)-(S) - Linalool
3. (-) - Borneol
4. (-)-(R) - Linalyl Acetate
5. (+)-(S) - Linalyl Acetate

Standards:

(-)-(R) - Linalool, (+)-(S) - Linalool
 (Fluka cat. # 62140)

(-)-(R) - Linalyl Acetate, (+)-(S) - Linalyl Acetate
 (Fluka cat. # 45980)

(-) - Borneol (Fluka cat. # 15598)

