

Column: **MEGA-PAH - 0.15mm, 0.15 μ m, 15m**
 Catalog Code: C-PAH-015-015-15

Conditions:

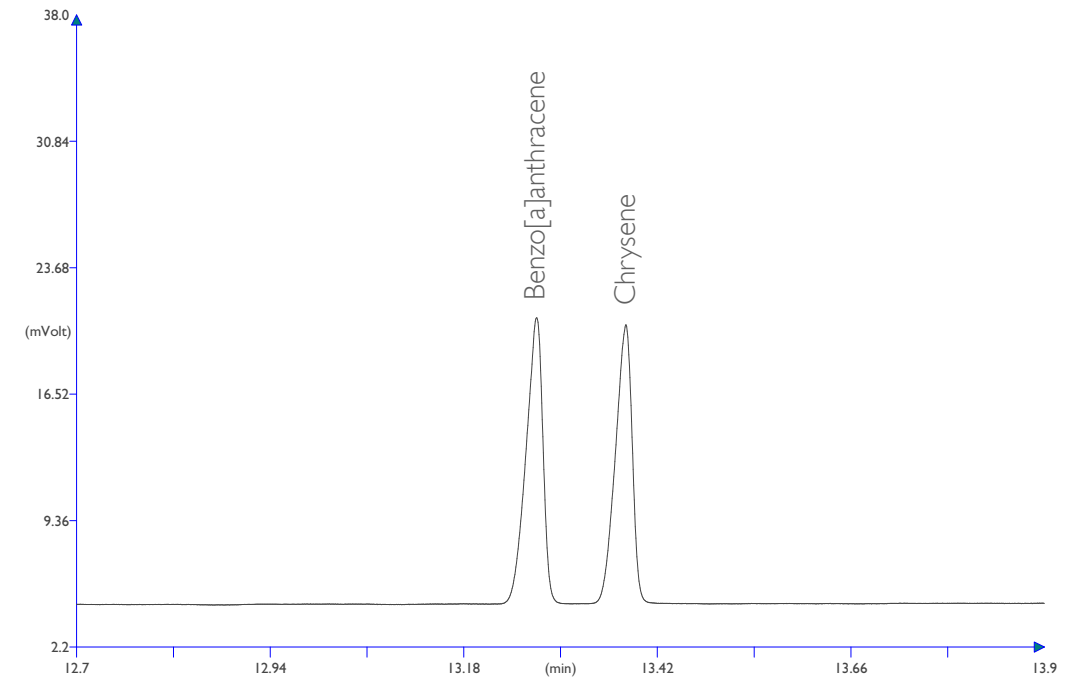
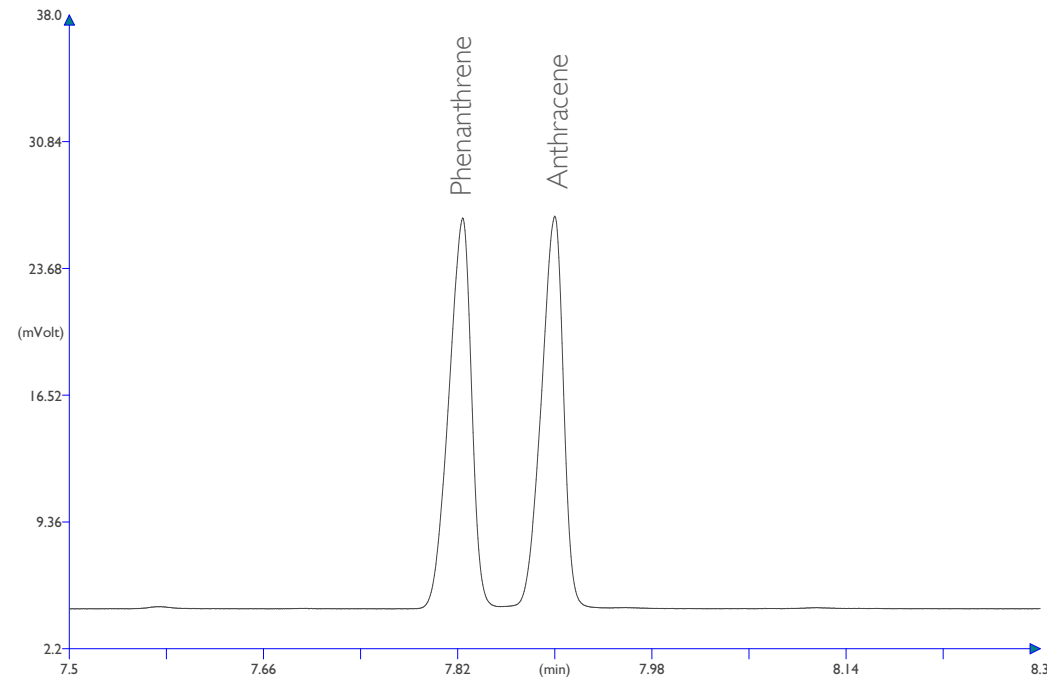
Injection: Split 250°C, 0.2 μ L injection volume,
 300mL/min split flow.
 Detector: FID 330°C.
 Oven Program: 90°C, 12°C/min, 340°C.
 Carrier Gas: Hydrogen, 170kPa.

Sample:

8270 Calibration Mix #5, Revised 2000 μ g/mL in
 Methylene Chloride.

EPA method 610, 8100, 8270

- | | |
|------------------------|----------------------------|
| 1. Naphthalene | 10. Pyrene |
| 2. 1-methylnaphthalene | 11. Benzo[a]anthracene |
| 3. 2-methylnaphthalene | 12. Chrysene |
| 4. Acenaphthylene | 13. Benzo[b]fluoranthene |
| 5. Acenaphthene | 14. Benzo[k]fluoranthene |
| 6. Fluorene | 15. Benzo[a]pyrene |
| 7. Phenanthrene | 16. Indeno[1,2,3-cd]pyrene |
| 8. Anthracene | 17. Dibenzo[a,h]anthracene |
| 9. Fluoranthene | 18. Benzo[g,h,i]perylene |



Column: **MEGA-PAH - 0.15mm, 0.15 μ m, 15m**
Catalog Code: C-PAH-015-015-15

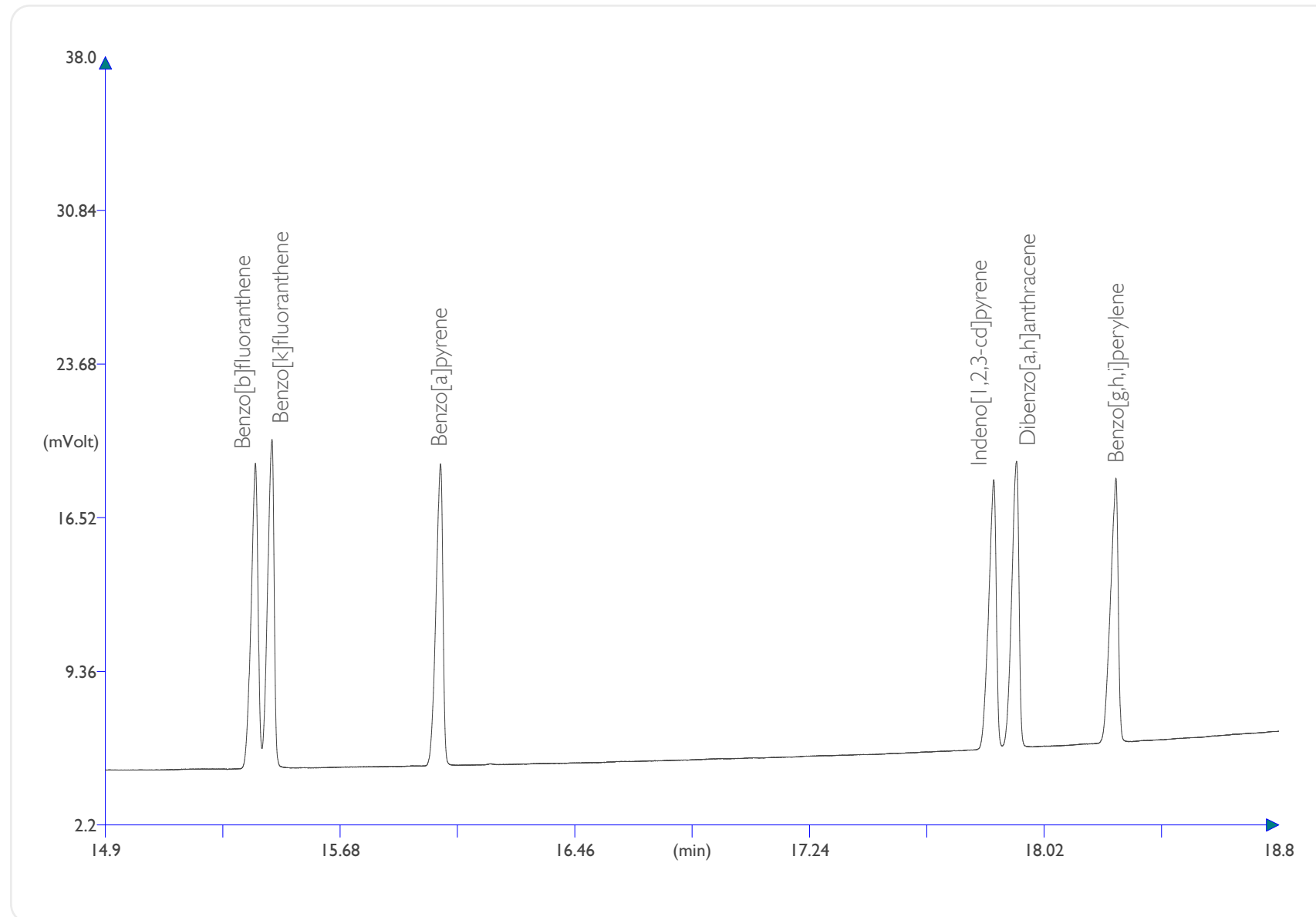
Sample:
8270 Calibration Mix #5, Revised 2000 μ g/mL in
Methylene Chloride.

EPA method 610, 8100, 8270

Conditions:

Injection: Split 250°C, 0.2 μ L injection volume,
300mL/min split flow.
Detector: FID 330°C.
Oven Program: 90°C, 12°C/min, 340°C.
Carrier Gas: Hydrogen, 170kPa.

GO BACK
TO THE ENTIRE
CHROMATOGRAM 



Column: **MEGA-PAH - 0.15mm, 0.15 μ m, 15m**
Catalog Code: C-PAH-015-015-15

Conditions:

Injection: Split 250°C, 0.2 μ L injection volume,
300mL/min split flow.
Detector: FID 330°C.
Oven Program: 90°C, 12°C/min, 340°C.
Carrier Gas: Hydrogen, 170kPa.

Sample:

8270 Calibration Mix #5, Revised 2000 μ g/mL in
Methylene Chloride.

EPA method 610, 8100, 8270

GO BACK
TO THE ENTIRE
CHROMATOGRAM



contact us: info@mega.mi.it

 follow us [@MEGAColumns](https://twitter.com/MEGAColumns)

www.mega.mi.it

since
1980 