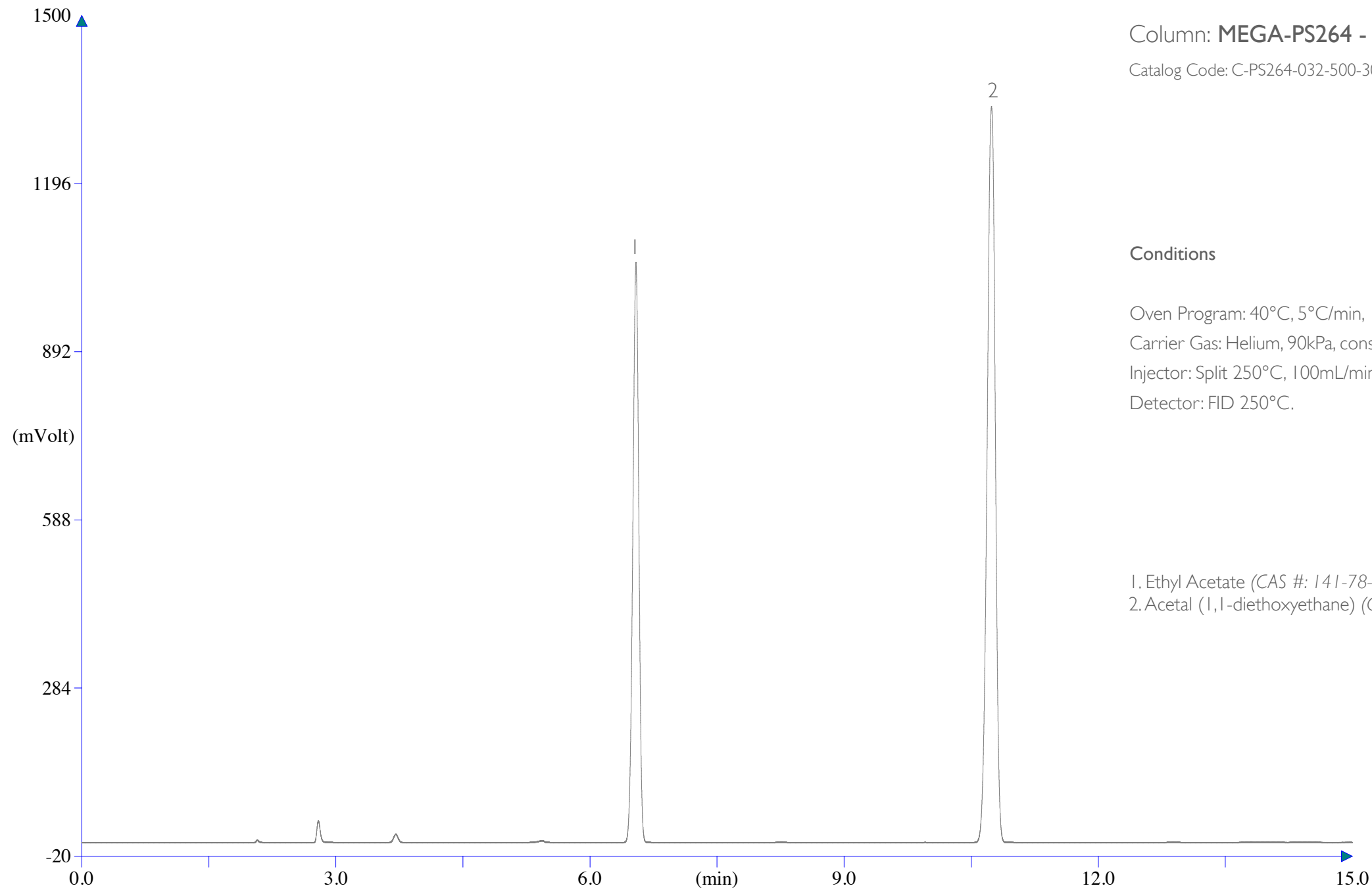


Acetal - Ethyl Acetate



Column: **MEGA-PS264** - 0.32mm, 5.00 μ m, 30m

Catalog Code: C-PS264-032-500-30

Conditions

Oven Program: 40°C, 5°C/min, 115°C.

Carrier Gas: Helium, 90kPa, constant pressure.

Injector: Split 250°C, 100mL/min split flow, 0.5 μ L volume injected.

Detector: FID 250°C.

1. Ethyl Acetate (CAS #: 141-78-6)

2. Acetal (1,1-diethoxyethane) (CAS #: 105-57-7)

MEGA[®]

www.mega.mi.it