

Ethylene in Air



Column: **MEGA-PS264 - 0.32mm, 5.00 μ m, 30m**
Catalog Code: C-PS264-032-500-30

Conditions:

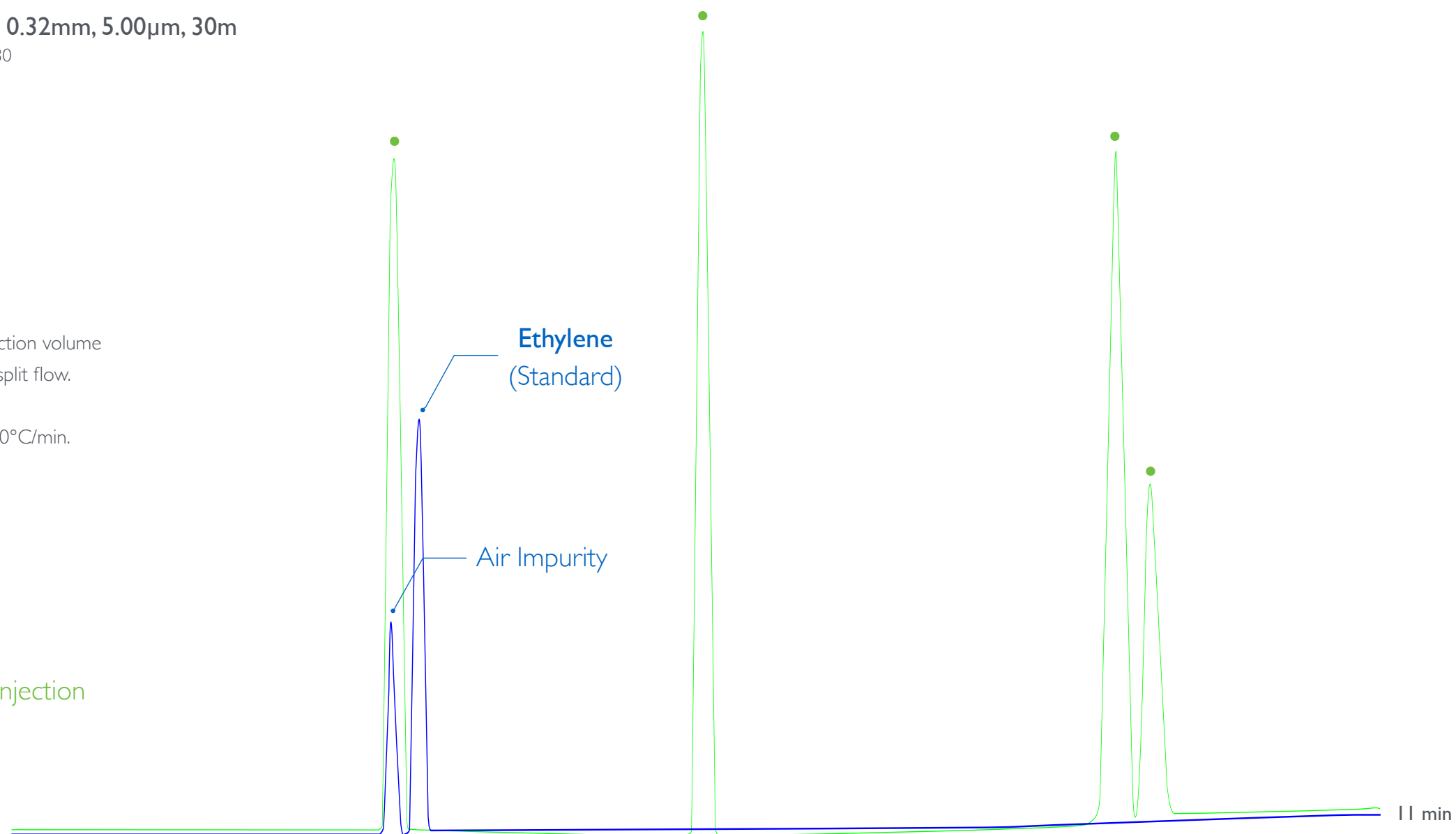
Injection: Split 250°C, 1 mL injection volume
with a Gas Syringe, 25 mL/min split flow.

Detector: FID 250°C.

Oven Program: 40°C (4 min), 10°C/min.

Carrier Gas: Helium, 100 kPa.

• = Ambient Air blank injection





since
1980



MEGA[®]
improve your GC analysis

contact us: info@mega.mi.it



follow us [@MEGAColumns](https://twitter.com/MEGAColumns)

www.mega.mi.it