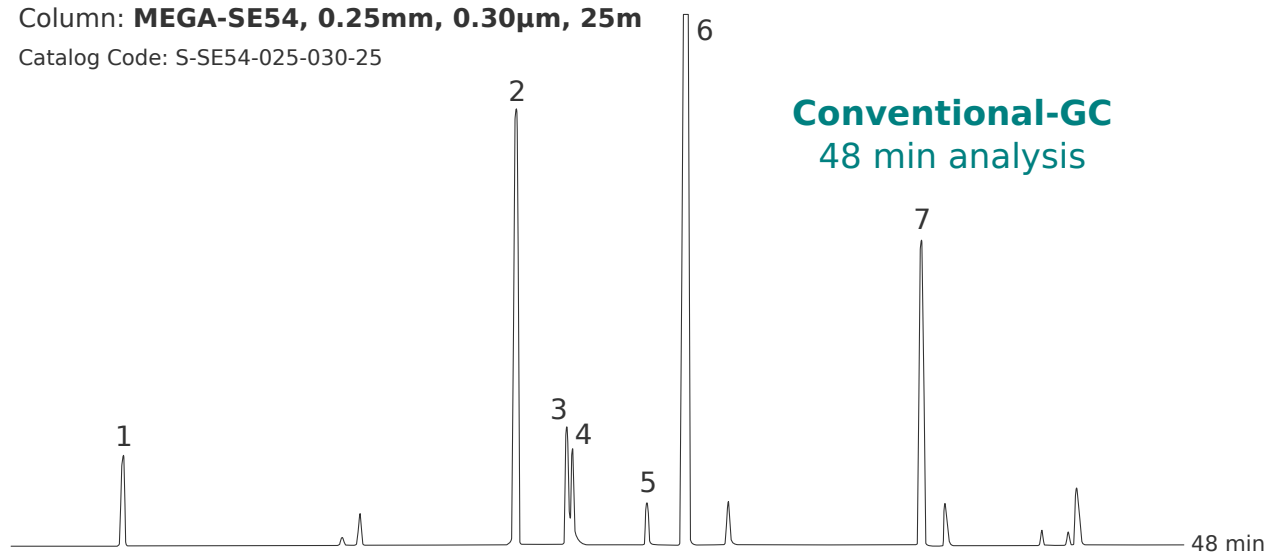
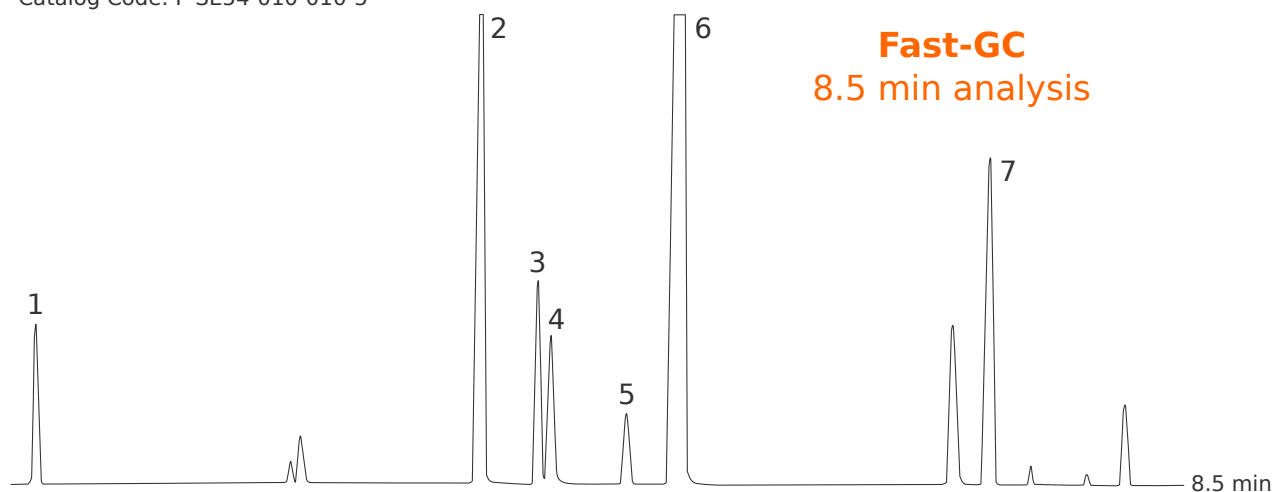


Column: **MEGA-SE54, 0.25mm, 0.30µm, 25m**  
Catalog Code: S-SE54-025-030-25



Column: **MEGA-SE54 FAST, 0.10mm, 0.10µm, 5m**  
Catalog Code: F-SE54-010-010-5



## Chamomile Essential Oil Comparison on MEGA-SE54 phase

### Conventional-GC Conditions:

Injection: Split 230°C, 1µL, 1:50 Split Ratio.  
Sample Dilution: 1% in Cyclohexane.  
Detector: FID 250°C.  
Oven Temp.: 50°C (0.1min), 3°C/min, 250°C (5min).  
Carrier Gas: Hydrogen, 1.5 mL/min.

### Fast-GC Conditions:

Injection: Split 230°C, 0.5µL, 1:250 Split Ratio.  
Sample Dilution: 1% in Cyclohexane.  
Detector: FID 250°C.  
Oven Temp.: 50°C (0.1min), 50°C/min, 250°C (5min).  
Carrier Gas: Hydrogen, 0.5 mL/min.

### Peaks:

1. Trans-Beta-Farnesene
2. Bisabolol Oxide B
3. Alpha-Bisabolone Oxide
4. Alpha-Bisabolol
5. Chamazulene
6. Bisabolol Oxide A
7. Spiroether

Acknowledgement: Prof. C.Bicchi, C.Brunelli et al. - Università di Torino, Dipartimento di Scienza e Tecnologia del Farmaco, Via Pietro Giuria, 9 - Torino - Italy.

