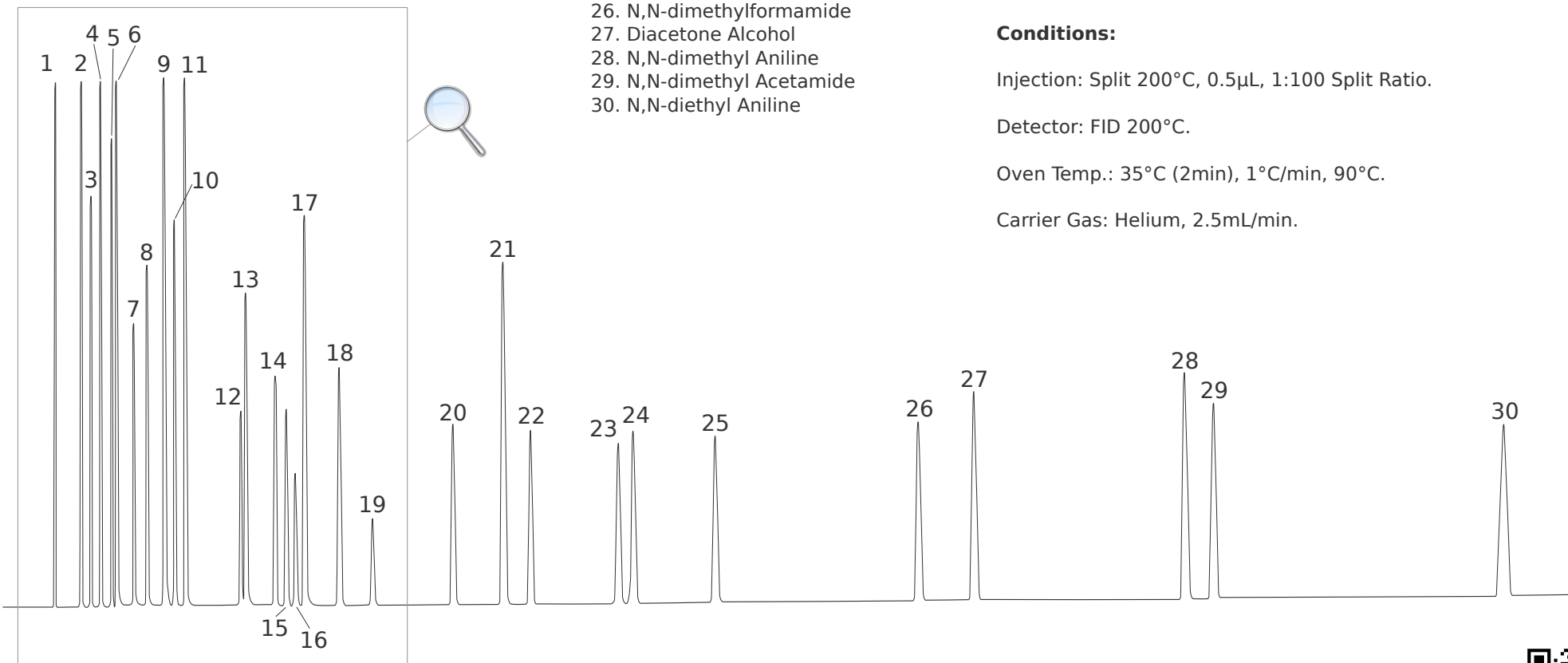


Peaks:

- | | | |
|-------------------------|-----------------------|-------------------------------|
| 1. Ethyl Ether | 8. Trichloro Ethylene | 17. p-Xylene |
| 2. Acetone | 9. Ethanol | 18. Mesityl Oxide |
| 3. Carbon Tetrachloride | 10. Acetonitrile | 19. o-Xylene |
| 4. Ethyl Acetate | 11. Toluene | 20. n-Butanol |
| 5. Methylene Chloride | 12. 1,4-dioxane | 21. Pyridine |
| 6. Benzene | 13. n-Butyl Acetate | 22. 2-Methoxy-Ethanol |
| 7. Methanol | 14. Propanol | 23. 2-Methoxy-Ethanol Acetate |
| | 15. Ethyl Benzene | 24. 2-Ethoxy-Ethanol |
| | 16. m-Xylene | 25. 2-Ethoxy-Ethanol Acetate |



Solvents on MEGA-SOLVE Columns

Column: **MEGA-SOLVE 1 - 0.32mm, 0.25µm, 50m**

Catalog Code: C-SOLVE1-032-025-50

MEGA-SOLVE Columns are especially developed for analysis of very complex mixtures of solvents.

Conditions:

Injection: Split 200°C, 0.5µL, 1:100 Split Ratio.

Detector: FID 200°C.

Oven Temp.: 35°C (2min), 1°C/min, 90°C.

Carrier Gas: Helium, 2.5mL/min.

