

Acetal - Ethyl Acetate



Column: **MEGA-WAX 20M** - 0.25mm, 0.25 μ m, 50m

Catalog Code: C-WAX20M-025-025-50

Conditions:

Sample: 1:1 mix of Acetal and Ethyl Acetate.

Oven Program: 40°C, 2°C/min, 60°C.

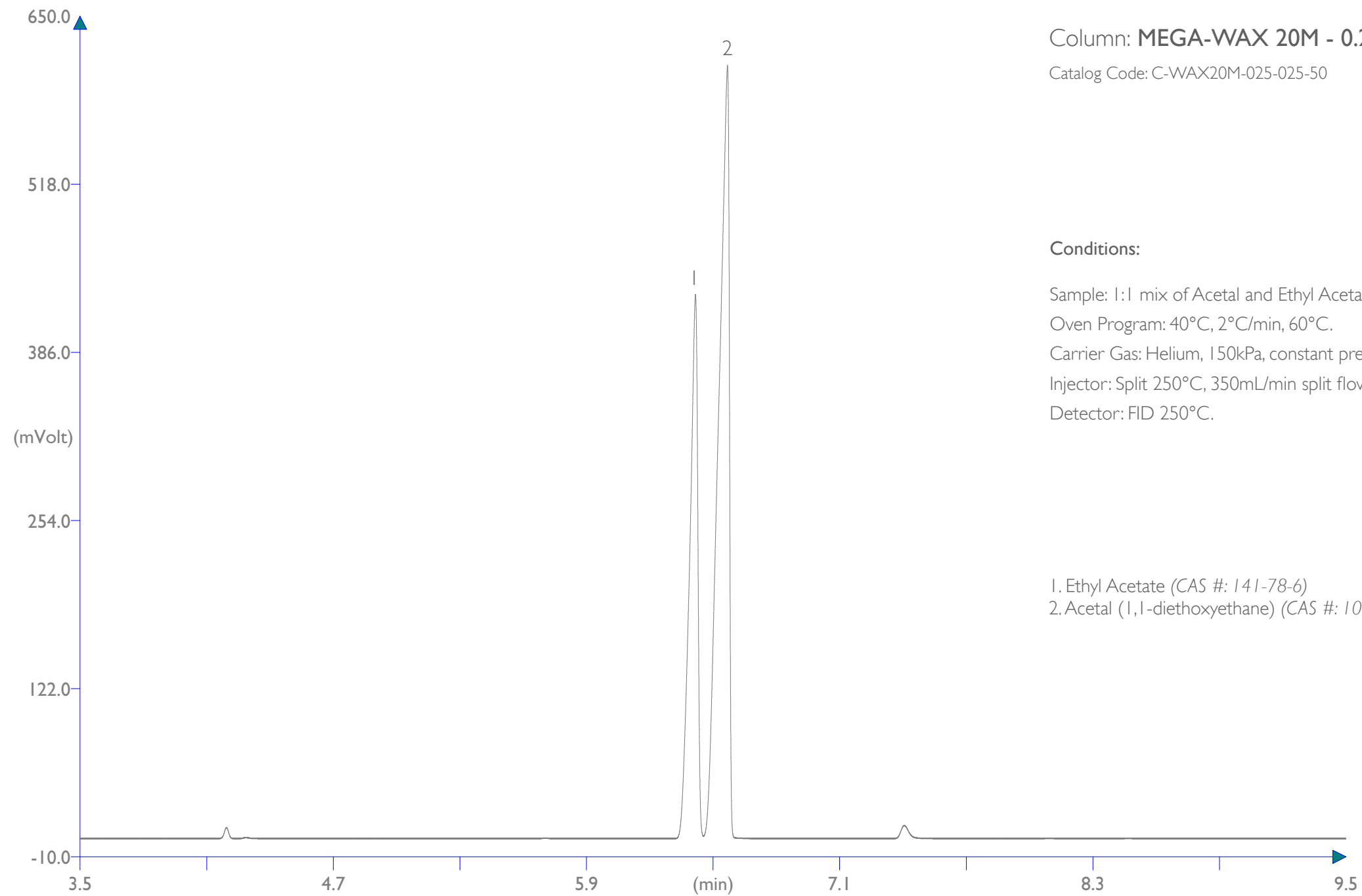
Carrier Gas: Helium, 150kPa, constant pressure.

Injector: Split 250°C, 350mL/min split flow, 0.5 μ L volume injected.

Detector: FID 250°C.

1. Ethyl Acetate (CAS #: 141-78-6)

2. Acetal (1,1-diethoxyethane) (CAS #: 105-57-7)



MEGA[®]

www.mega.mi.it